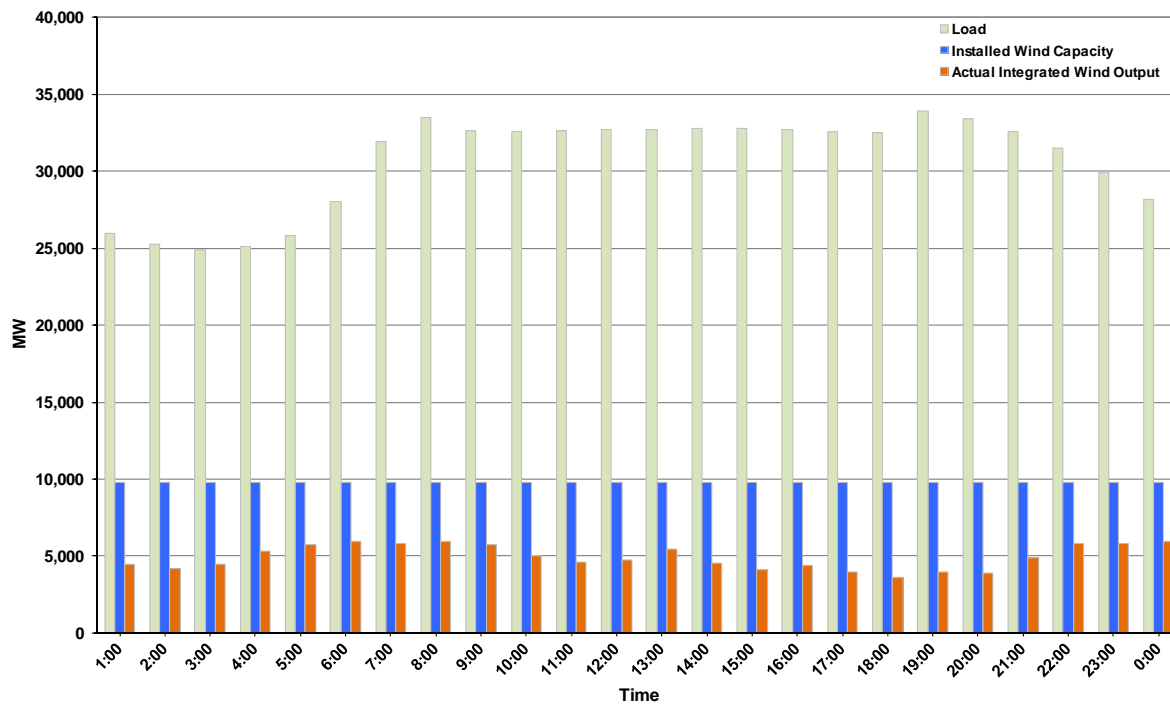




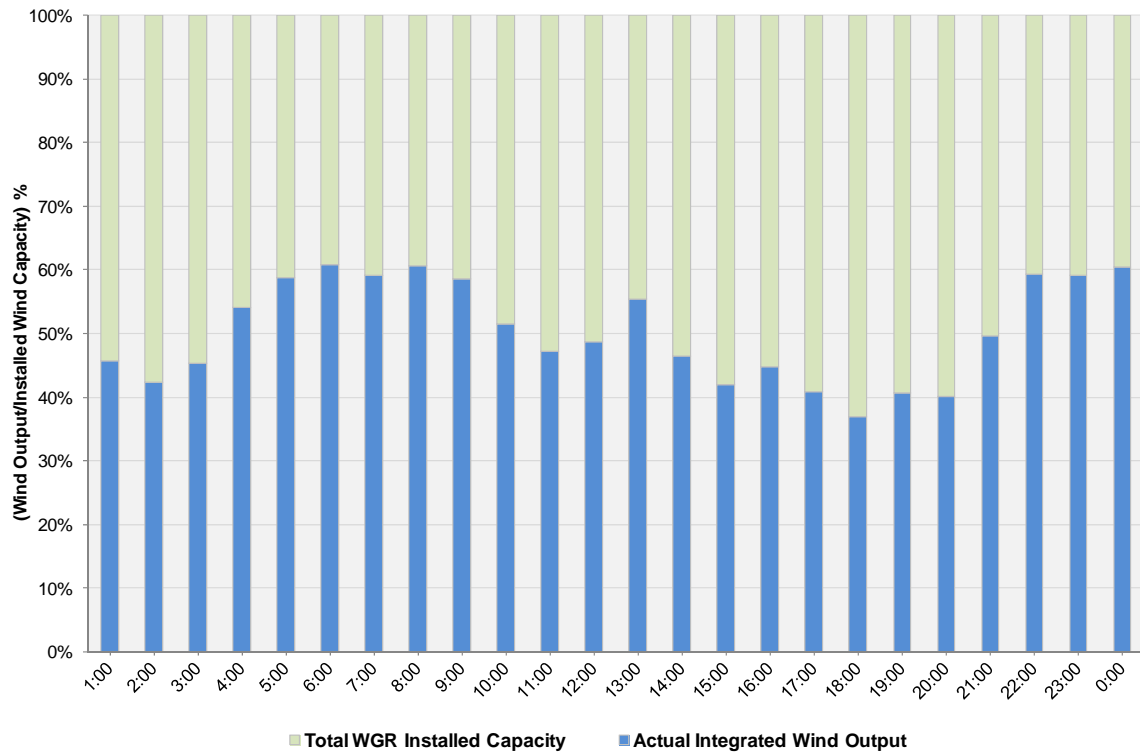
## ERCOT Grid Operations Wind Integration Report: 01/20/12

Peak Load	33,928 MW
Load Peak Hour (HE)	19
Wind over Peak	3,980 MW
Wind Record 10/07/11	7,400 MW
Max Wind Value	6,115 MW
Wind Peak Time	07:25
Wind Integration %	18.10%

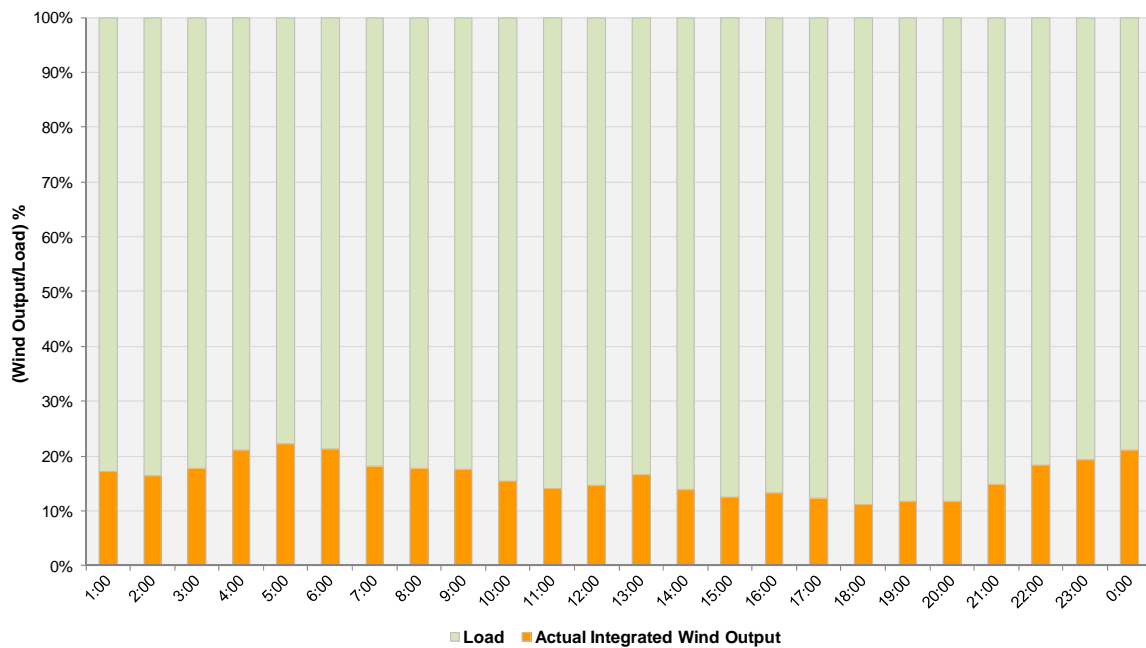
Hourly Average Actual Load vs. Actual Wind Output  
01-20-2012



**Actual Wind Output as a Percentage of the Total Installed Wind Capacity**  
**01-20-2012**



**Actual Wind Output as a Percentage of the ERCOT Load**  
**01-20-2012**



ERCOT Load vs. Actual Wind Output 1/13/2012 - 1/20/2012

